



Who will give you top yields  
from your PV plant?

The SINVERT PVM inverter family from 10 to 20 kW:  
now with peak efficiency levels >98%, compact, robust, durable.

Answers for the environment.

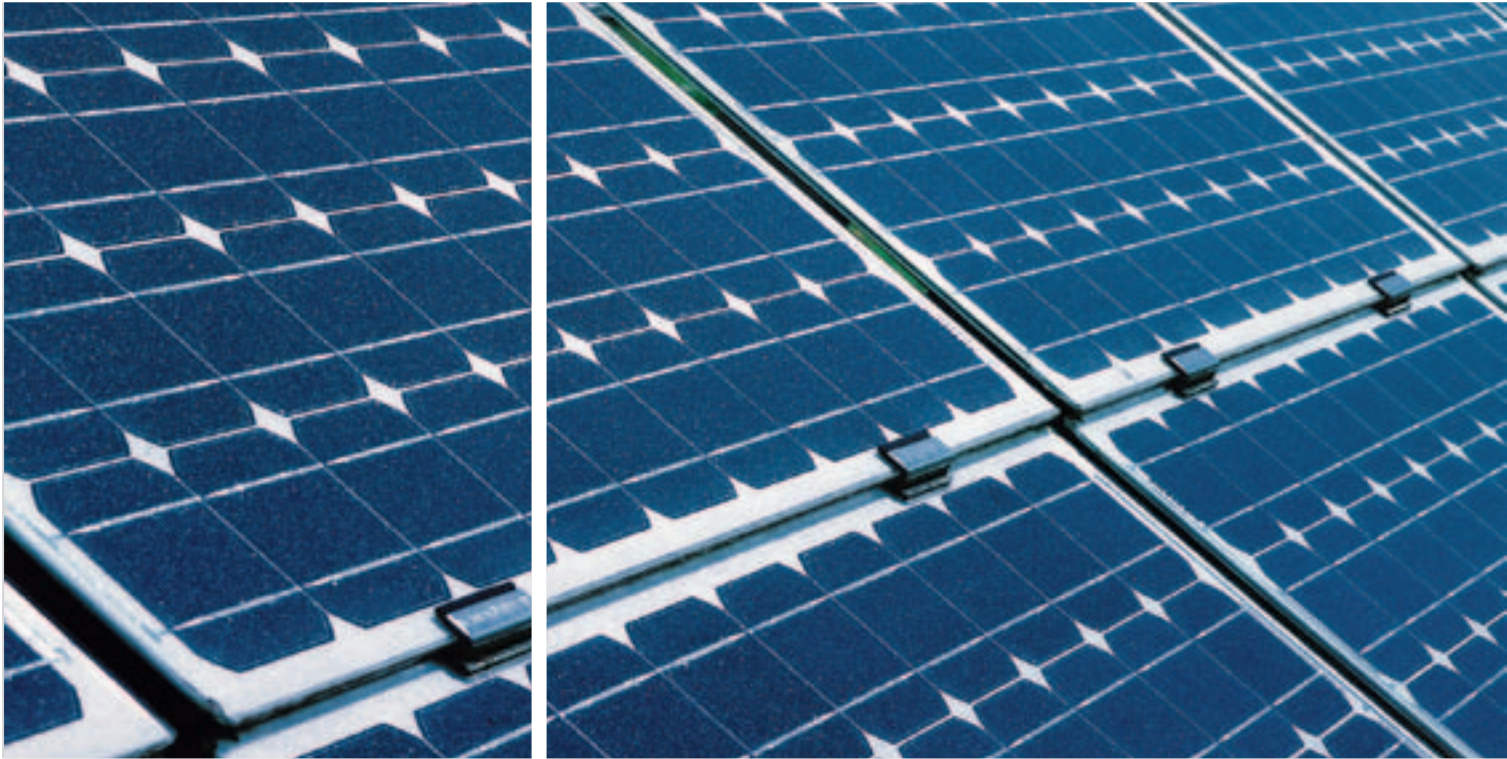
**SIEMENS**



## Sunny prospects for photovoltaic plants from 10 kW to the MW range

### The new SINVERT PVM photovoltaic inverters

Whether it is for barns, schools, roofs of industrial buildings, or ground-mounted plants – now you can very efficiently use the power of the sun: with the new 3-phase SINVERT PVM photovoltaic inverters. With these inverters, you will get a peak efficiency > 98% when converting solar power and feeding it into the grid. The compact wall-mounted devices are designed to be robust and durable. First-class performance which pays off: therefore 98+.



### **A top-of-the-line inverter family**

The SINVERT PVM inverters are available in 10, 13, 17 and 20 kW. On the one hand, this modularity simplifies planning and, on the other hand, it simplifies installation: You will need less devices and there is less cabling required than for conventional solutions.

### **Versatile, rugged and durable**

The compact wall-mounted units with degree of protection IP65 are suited for both indoor and outdoor use and for any kind of module technology, as long as no module grounding is required. By not using external fans, the units are extremely rugged and less sensitive to environmental influences.

### **Your benefits at a glance:**

- Ideal for medium-sized PV plants from 10 kW to the MW range

- Maximum plant yield and a high degree of plant availability
- Powerful and compact wall-mounted units
- Flexible PV plant planning thanks to a modular family of devices
- Can be used internationally
- Easy to install
- Low total cost of ownership: maintenance-free devices and high-quality components
- Worldwide service, hotline support, very fast replacement device service



Extremely rugged: SINVERT PVM inverters do not have external fans.

## Technical data at a glance

	Type	PVM10	PVM13	PVM17	PVM20
DC	U MPP min	380 V	420 V	460 V	480 V
	U MPP max	850 V	850 V	850 V	850 V
	U DC max	1000 V	1000 V	1000 V	1000 V
	I DC max	29 A	30 A	37 A	41 A
	Overvoltage protection	Type 3			
AC	P rated	10.0 kW	12.4 kW	16.5 kW	19.2 kW
	P max	10.0 kW	12.4 kW	16.5 kW	19.2 kW
	I max	18 A	18 A	29 A	29 A
	Grid connection	3AC 400 V; 50/60 Hz			
	cos phi	0.9 i to 0.9 c			
	THD I	< 2.5 %			
	eta max	98.0 %	98.0 %	98.2 %	98.2 %
	eta EU	97.4 %	97.5 %	97.8 %	97.8 %
	Infeed starting at	20 W			
	Own consumption at night	< 0.5 W			
	Overvoltage protection	Typ 3			
	Ambient conditions	T min	-25 °C	-25 °C	-25 °C
T max		+55 °C	+55 °C	+55 °C	+55 °C
T max for P rated		+50 °C	+50 °C	+45 °C	+45 °C
Cooling		natural convection			
max. installation altitude		2000 m above sea level			
Operating noise (approx.)		45 dB(A)			
Width (approx.)		530 mm			
Height (approx.)		600 mm			
Depth (approx.)		265 mm			
Weight (approx.)		40 kg			

### SINVERT PVM – the highlights:

- Three-phase solar inverters in 4 outputs: 10, 13, 17 and 20 kW
- Peak efficiency of 98%
- European efficiency >97% over a very broad range of power
- Very low own consumption (night < 0.5 W)
- Very wide MPP range
- Full output up to 40 °C respectively 50 °C ambient temperature
- Rugged, compact wall-mounted unit for indoors and outdoors (degree of protection IP65) without external fans
- Suited for any module technology, as long as no module grounding is required
- SINVERT Webmonitor for worldwide access and analysis of inverter and plant data
- SINVERT Select configuring tool for optimal PV plant planning

Siemens AG  
Industry Sector  
Control Components and Systems Engineering  
P.O. Box 23 55  
90713 FÜRTH, GERMANY

[www.siemens.com/sinvert](http://www.siemens.com/sinvert)

Subject to change without prior notice  
06/2010  
Order No.: E80001-A2050-P300-V1-7600  
DISPO 46371  
SCHÖ/27616 GI.CE.PV.PVSV.52.0.08 SB05103.  
Printed in Germany  
© Siemens AG 2010

The information provided in this brochure contains merely general descriptions or performance characteristics which in case of actual use do not always apply as described or which may change as a result of further development of the products. An obligation to provide the respective characteristics shall only exist if expressly agreed in the terms of contract.

All product designations may be trademarks or product names of Siemens AG or supplier companies whose use by third parties for their own purposes could violate the rights of the owners.